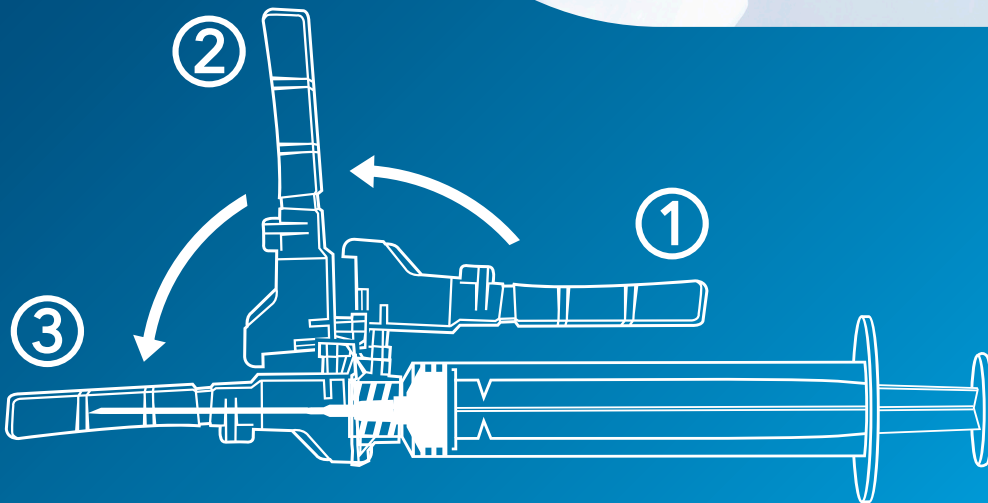


LIFELONG[®]

SAFETY SYRINGE



SAFETY
SYRINGE
COVER TYPE

LIFELONG's safety-engineered syringe – Shield Pro, specially designed to address “Syringe Reuse” and to decrease the risk of “Needlestick Injury”. Easy-to-use safety syringe offers protection to healthcare professionals by just a push of finger and improve overall clinical experience.



CATALOGUE

Features and benefits:

Safety:

Active safety mechanism where safety shield covers the needle completely and hence decreasing the risk of “Needlestick Injury” which is a major global concern for the safety of healthcare professionals.

Once the safety is activated, it cannot be reversed, prevents “syringe Reuse”, provides safety to patients and healthcare professionals.

Ease of Use:

One Hand Safety Activation

- a) Finger Activation
- b) Thumb Activation
- c) Flat Surface Activation

Designed as per ISO 7886-4 Standards:

Safety Syringe confirms to ISO 7886-4, ISO 7864, ISO 80369, ISO 9626.

High Quality Medical Grade Raw Material:

Provides superior performance where medical grade virgin poly propylene used to manufacture both plunger and barrel.

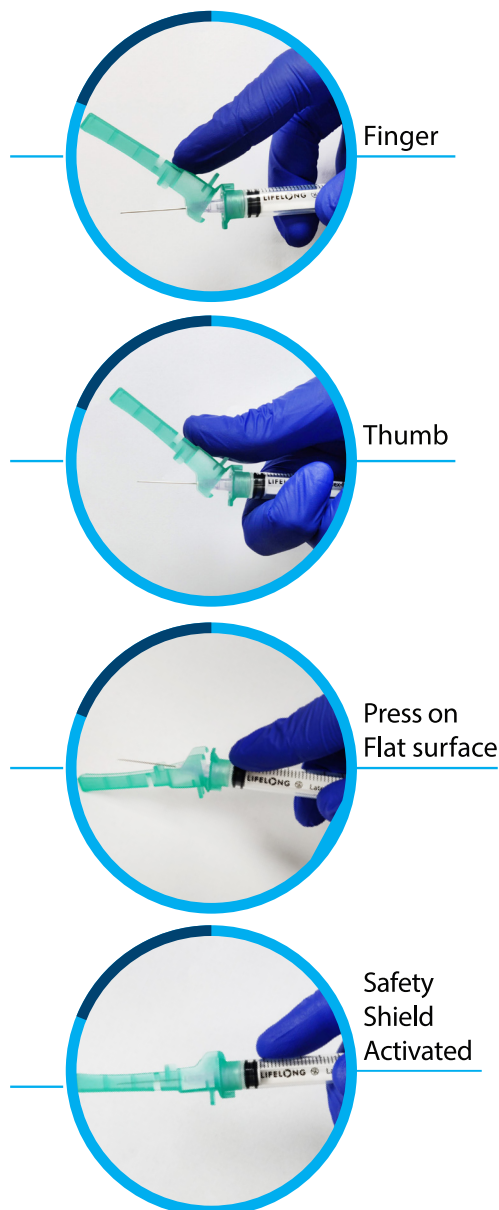
Gasket made from highly inert Thermo Plastic Elastomer(TPE), in line with Global Practice.

Sterilization:

Sterilized by Ethylene Oxide (ETO)



One Hand Safety Activation



PACKAGING			
Size	Pieces / Box	Boxes / Carton	Total Pieces / Carton
2mL	100	18	1800
3mL	100	18	1800
5mL	100	15	1500
10mL	50	20	1000
20mL	50	8	400

AVAILABLE NEEDLE SIZES										
Pink	Beige	Yellow	Green	black	Blue	Purple	Orange	Brown	Grey	Red
18G	19G	20G	21G	22G	23G	24G	25G	26G	27G	29G

PVC
FREE

LATEX
FREE

DEHP
FREE

Lifelong Meditech Pvt. Ltd.

Factory & Corporate Office:

Plot No. 18, Sector 5, IMT Manesar,
Gurugram - 122050 (Haryana), India
Tel: +91-124-4406600 | Fax: +91-124-4406699

Follow us on:

www.lifelongmed.com

Registered Office:

5th Floor, Unit No. 508, DLF South Court,
Saket District Centre, New Delhi - 110017, India
Tel: +91-11-26017063-64, 46017700 | Fax: +91-11-46017799

Email: info@lifelongindia.com

Customer Care Email: lmccustomer@lifelongindia.com

CIN No.: U85110DL2002PLC116251